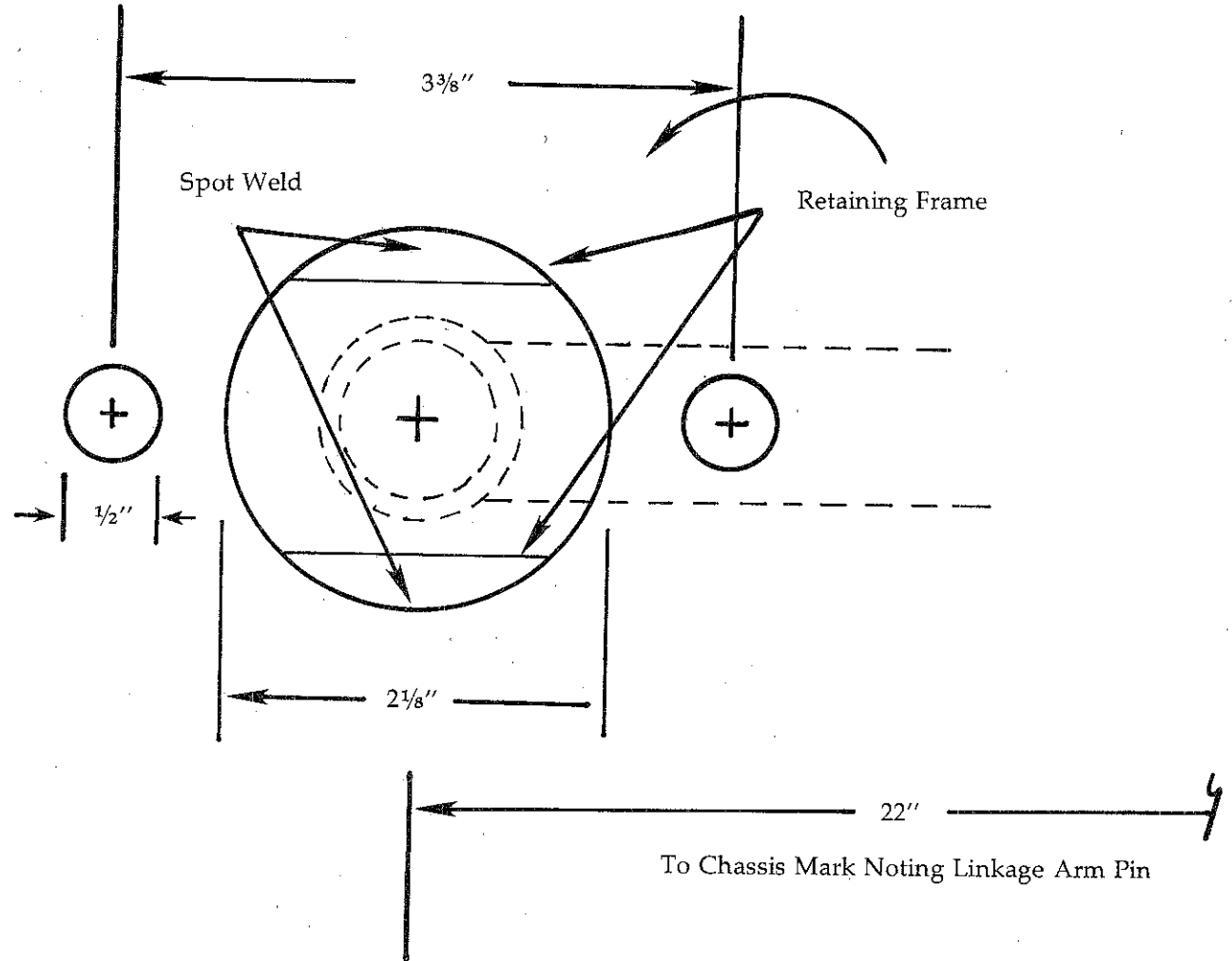


# Template 1

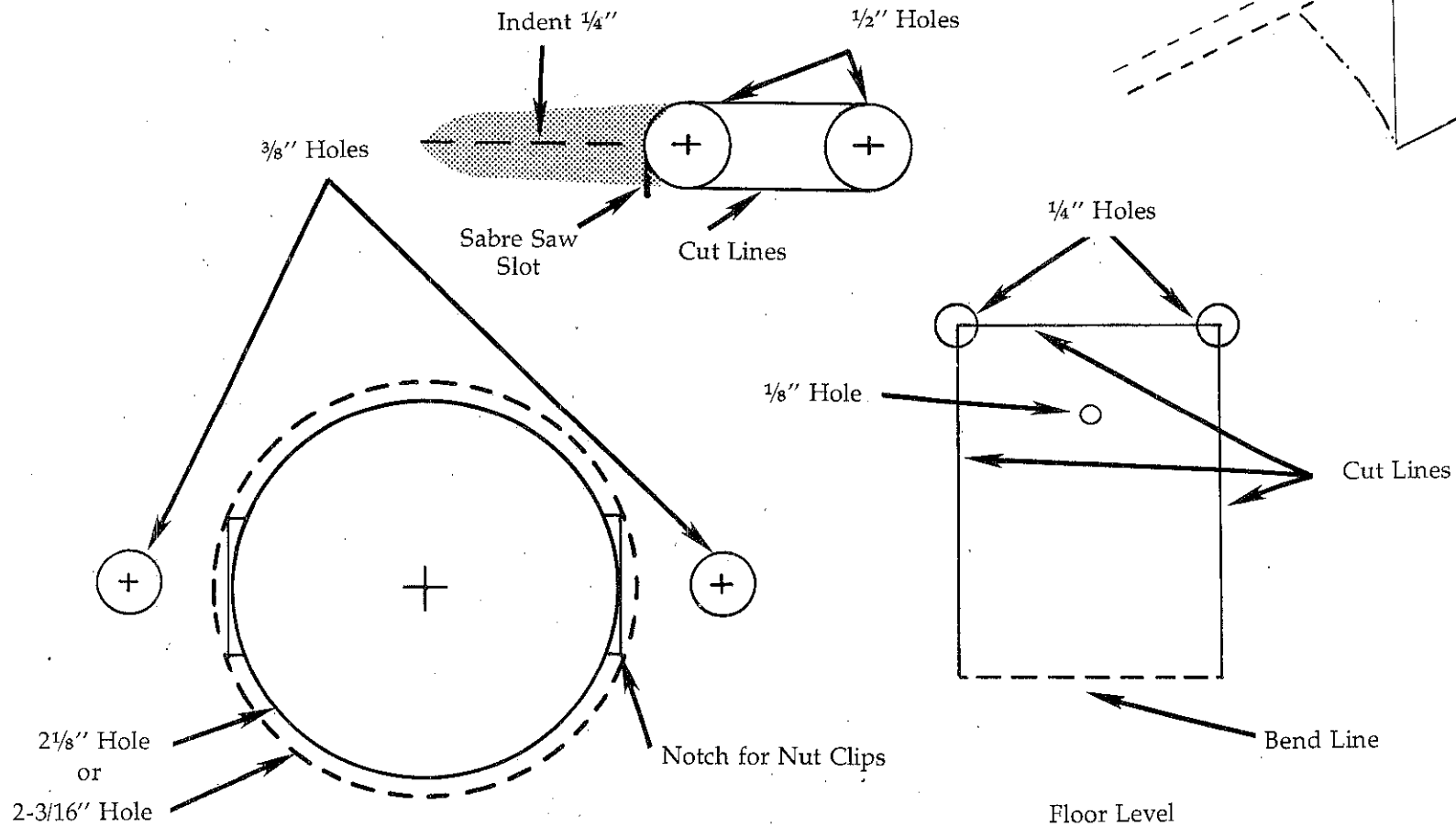
## Shifter Relocation



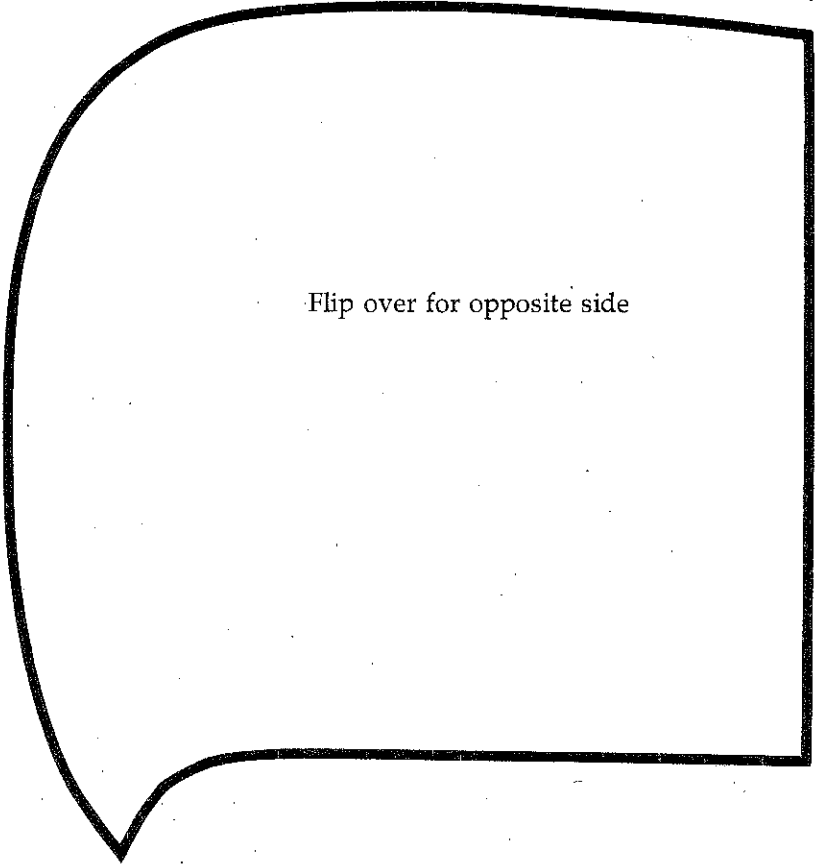
## Template 2 Pedal Relocation

Option: you may use a machine screw with a nut on the backside to secure the cable, a sheet metal screw and locktite, or a spot weld on the cable housing to the tab.

Bend the tab in at 45° to 50° or until the cable lines up in the same relative position with the clutch hook, as it did in its original position.



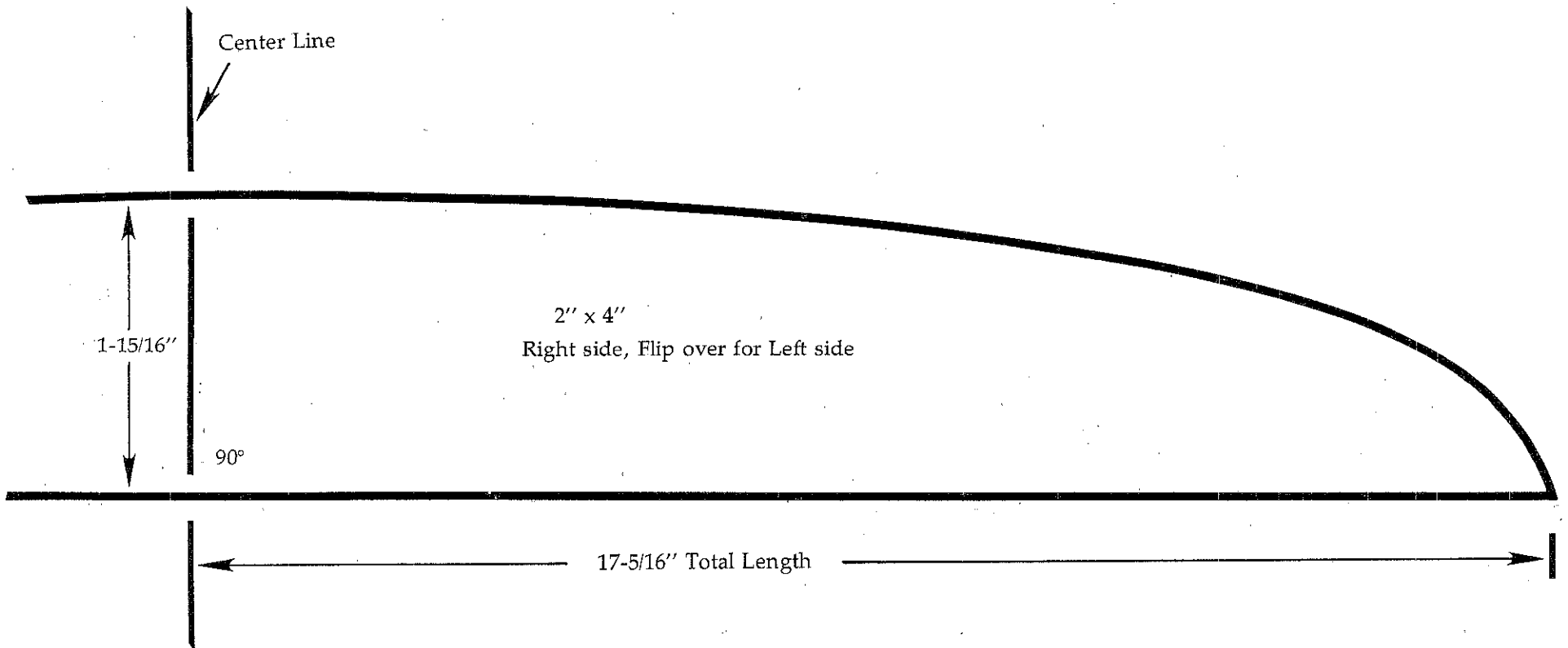
**Template 3**  
**Grill Cut**



Flip over for opposite side

Chrome Bead Line

**Template 4**  
**Grill Bridge**  
(1/2 of full-size piece)

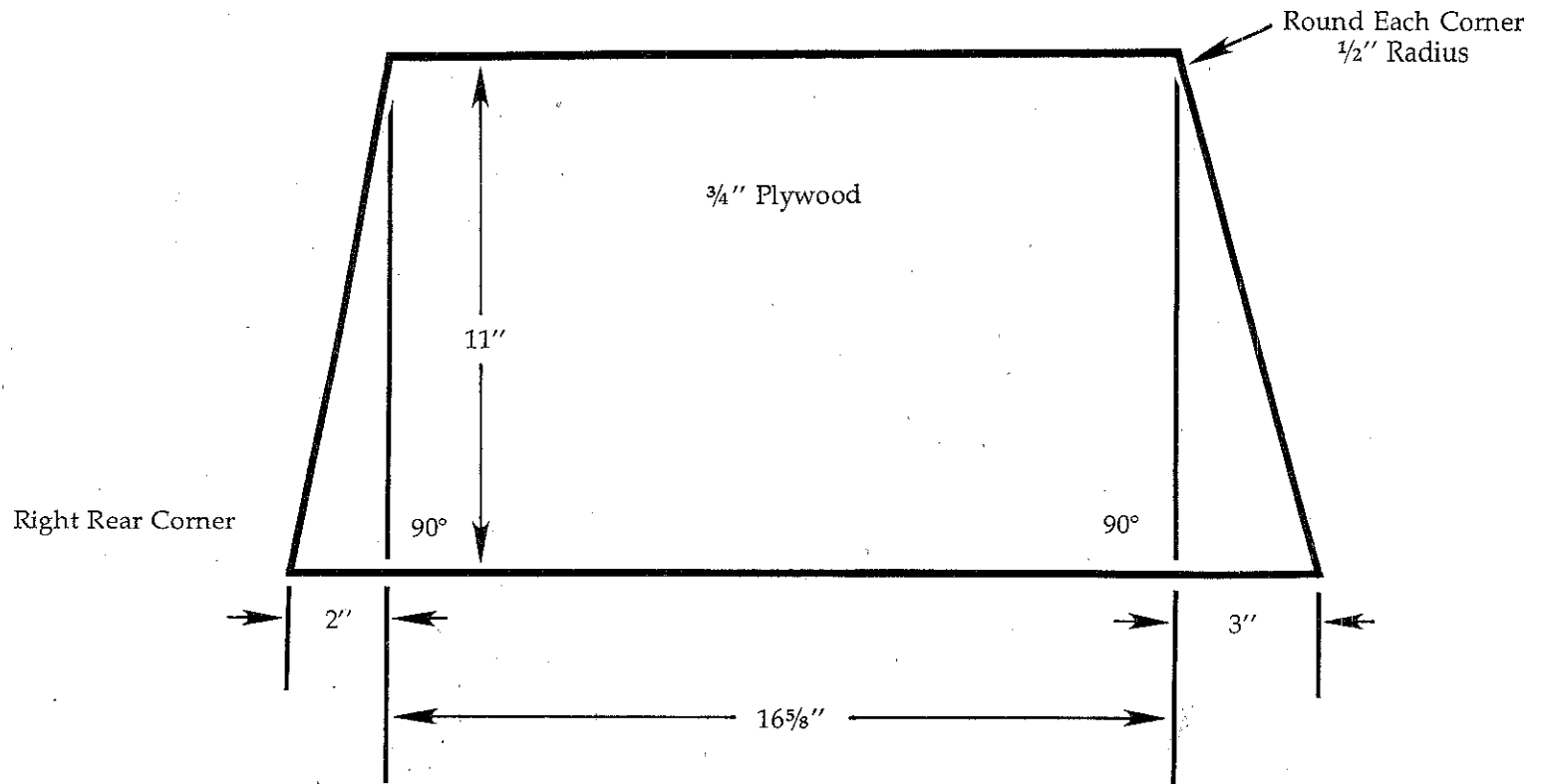


To Scale

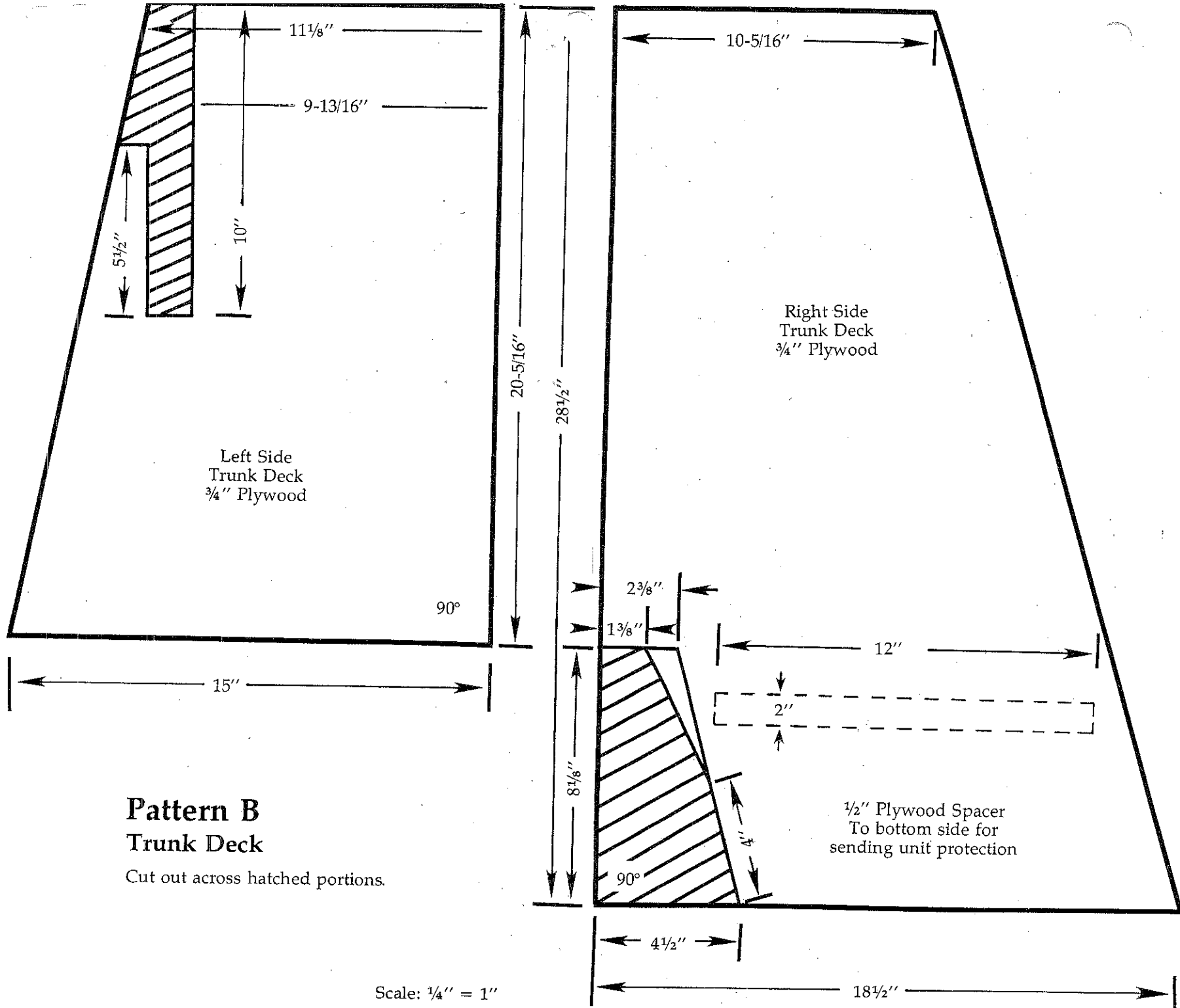
# Pattern A

## Weight Box Top

Pry sides of box around the top and insert top into the box. The top should fit tight.



Scale:  $\frac{1}{4}$ " = 1"



**Pattern B**  
**Trunk Deck**  
 Cut out across hatched portions.

Scale: 1/4" = 1"

# Pattern C

Seat Supports  
Left and Right (2)

