

DAYTONA MIGI INFLATION-FIGHTER SPECIAL...

Don't let inflation keep you from owning your Daytona MIGI!!

We don't want inflation to stand in the way of owning the stunning Daytona MIGI. So we have prepared an offer that will allow you to enjoy building and driving your MIGI with just a few less frills. This package includes all the functional components necessary to get your MIGI highway approved and ready to roll. And don't worry, you may purchase the additional accessories when this inflation nonsense stops!

Beat inflation and still enjoy the Daytona MIGI for only...

\$4295.

plus crating & shipping

The Daytona MIGI Inflation-Fighter will include in addition to the MIGI Basic Body Kit:

Standard Door Hdwe.
Chromed Steel Grille
Stainless Grille Slats
Stainless Steel Bumpers
Chromed Bumper Guards
1 Pr. Headlight Housings
License Plate Light
Inside Mirror
1 Pr. Outside Mirrors

Dash Pack
VDO Guage Set
Wiring Harness
Nut & Bolt Package
1 Pr. TD Fender Lights
Wiper Arms & Blades
Stationary Windshield Brkts.
Chrome Runningboard Trim
Convertible Top & Side Curtains

*Additional accessories, as pictured, available on request.

ENCLOSED IS A \$500 DEPOSIT FOR MY INFLATION-FIGHTER SPECIAL

I will forward the balance when shipment is ready in order to save C.O.D. charges.

When ready, please forward my Daytona MIGI, balance C.O.D. to:

Attach Order Form.

Send and Make Checks Payable to:

DAYTONA AUTOMOTIVE FIBERGLASS, INC.

819 Carswell Avenue

Holly Hill, Florida 32017

(904) 253-2575 • (904) 255-2110

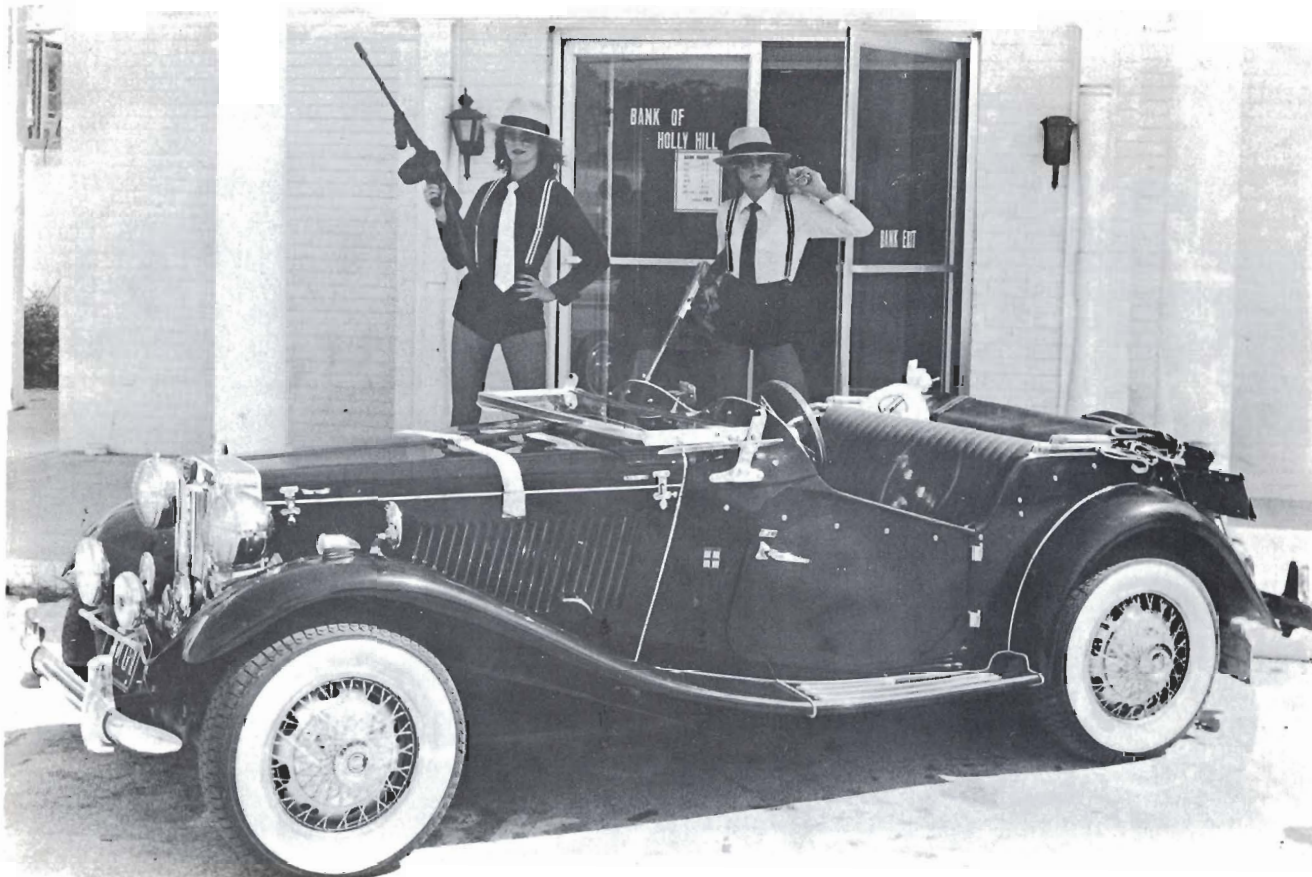
(cancellations are subject to a charge of 15% of the purchase price)

Name _____

Address _____

City _____ State _____

Zip _____ Phone _____



The Great Getaway Special.....

Build your DAYTONA MIGI now and save \$ \$ \$

A Getaway car must be able to perform quickly and dependably. Gas mileage should be exceptional and maintenance minimal to eliminate unnecessary stops. A convertible top would be nice for maximum visibility on out-of-the-way mountain or country roads. Structural comfort and durability is essential. So, when you're looking for a getaway car.

Getaway in a DAYTONA MIGI...
it's a real steal!

Getaway now
for only

\$5495

(solid color)

plus crating & shipping

Your "Getaway Package" will include:

Daytona MIGI Basic Body Kit, ALL NEW Fold-down windshield, Musical air horns.

PLUS:

Standard door hardware
MIGI steel grille shell
MIGI steel grille slats
Moto-meter
Bumpers
Bumper guards
Headlights
Bullet Fender Lights
License plate light
Back-up light
Fog & driving lights

Wiper arms, blades
Inside mirror
Outside mirrors
VDO gauge set
Dash Pack
Steering wheel
Runningboard trim
Wiring harness
Washer kit
Defroster
Stoneguards

Badge bar
Badges (2)
Tank Straps
Luggage rack
Wind wings
Antenna
Nut & Bolt package
Wire wheel hub caps
Top set
Deluxe interior, vinyl
contour seat

ENCLOSED IS A \$1000 DEPOSIT FOR MY GETAWAY SPECIAL

I will forward the balance when shipment is ready in order to save C.O.D. charges.

When ready, please forward my Daytona MIGI, balance C.O.D. to:

Attach Order Form.

Send and Make Checks Payable to:

DAYTONA AUTOMOTIVE FIBERGLASS, INC.

819 Carswell Avenue

Holly Hill, Florida 32017

(904) 253-2575 • (904) 255-2110

Name _____

Address _____

City _____ State _____

Zip _____ Ph. _____

THE DAYTONA MIGI

Not since 1952 has the automotive world been treated to a sportscar as exciting as the British Leyland MG-TD. This was, indeed, the car that made Americans sportscar conscious. To be sure, the MG-TD offered its driver an invigorating, open-aired ride that would remain in the hearts and memories of the fortunate few who had the opportunity to enjoy one.

This opportunity is here once again in the fabulous Daytona MIGI...

A stunning, custom built fiberglass replica that is both mechanically and structurally superior to its memorable counterpart. Steel reinforced and rust free, the Daytona MIGI offers nimble, quick sportscar performance at 30-40 miles per gallon. By combining the dependable Volkswagen chassis and engine with this quality crafted fiberglass coach, only minimal maintenance will protect the beauty and value of the Daytona MIGI for years.

The Daytona MIGI comes equipped with an array of classic accessories, such as the fold-down windshield, original TD fender lights and door handles, stainless steel bumpers and chromed steel grille shell.

The most difficult decision in owning a Daytona MIGI is the choice of color combination. There are 10 exciting colors to choose from (including two-tone) and 6 top colors with matching interior in either vinyl, crushed velvet or velour.

Since the factory is engaged in only the manufacture and sale of unassembled kits, and assembled bodies, a network of factory authorized dealers who adhere to the strict quality control standards of the factory has been established to complete the assembled car. Simply contact any of the dealers listed below to order your Daytona MIGI or clip the coupon in the MIGI ad for further details.



THE FIRST, FINEST AND ONLY MIGI

A stunning sportscar that utilizes the dependable and economical Volkswagen chassis and engine and a quality crafted, steel reinforced fiberglass coach.

Elegantly appointed with such features as the chrome plated steel grille, a variety of deluxe interiors, defroster and heater, and an array of classic accessories, the Daytona MIGI is an unbeatable combination of style, performance and 30 mpg economy.

Available complete or unassembled.

Send \$2 for color brochure and \$3 for detailed Assembly Manual to:
 DAYTONA AUTOMOTIVE FIBERGLASS, INC. 819 Carswell Avenue
 Holly Hill, FL 32017 Phone: 904/253-2575
 In Canada call 604/946-1356 Toll Free 800/874-0138

Name _____
 Address _____
 City _____ State _____ Zip _____
 KCG

Participating Authorized Dealers

Sundance Motorcars
 Berkeley, CA
 415/849-1751

Impact Products
 Warner Robbins, GA
 912/923-2974

Classic Replicas
 University City, MO
 314/726-4911

Phil's Auto
 Oklahoma City, OK
 405/236-8531

Unique Motorcars
 Costa Mesa, CA
 714/642-6186

Old Car Company
 No. Chelmsford, MA
 617/256-1434

Mannon Coach
 Kimball, NE
 308/235-3138

Texas Custom Coach
 Beaumont, TX
 713/833-6616

Creative Cars, Inc.
 Grand Junction, CO
 303/242-8590

William Weaver
 Lansing, MI
 517/485-8981

Cottage Industry
 Montclair, NJ
 201/746-4405

Hiland Classics
 Chilhowie, VA
 703/783-8006

BUDDY COLORS



Tan



Cream



Yellow



Burgundy



Gray



Brown



White



Green



Red



Black



Blue

SEAT COVERS

Vinyl



Tan



Black



Teak



Burgundy



White



Buckskin



Gray



Blue



Red



Buckskin



Burgundy



Blue



Black



Gray



Red

TOPS



Buckskin



Tan



Black



White



Blue



Burgundy



Brown

CARPETS



Buckskin



Brown



Black



Red



Burgundy



Blue



Gray



by
Daytona Automotive Fiberglass, Inc.
819 Carswell Avenue • Holly Hill, Florida 32017
(904) 253-2575

12-1-81

DAYTONA MIGI BASIC BODY KIT **\$2595.00**

For FULL length "VW" chassis

SPECIFY GEL-COAT COLOR: RED, WHITE, YELLOW, B.R.GREEN, BLACK, TAN
BROWN, GREY, ROYAL BLUE, MAROON or CREAM.

Two-tones available for additional 100.00
INCLUDES:

- 1) Main section, STEEL reinforced. One piece w/FULL Front wall, dash, mounting flanges, rear fenders, inner panels, rear leather-grained (black) storage area. Body has wiper and windshield mounting locations. ALL panels and reinforcements pre-laminated into the main section by FACTORY.
- 2) One pair front fenders w/mounting flanges and braces.
- 3) Front splashpan/louvered grille, w/flanges for hood and side panel mounting.
- 4) Hood section: 1 steel reinforced hood; 2 louvered side panels.
- 5) Gas tank mounting (forward) section. Uses VW gas tank (tank not supplied).
- 6) One pair doors. Box-type inner and outer panels pre-laminated at the factory. Extra heavy in hinge and handle locations.
- 7) Special stainless steel door hinges, set of four, drilled & polished. One 30" piano hinge, one pair bonnet hooks, support hinges and edge guard for engine lid installation. One pair each, front hood hinges and latches, chromed brass.
- 8) One pair runningboards w/heavy mounting flanges.
- 9) Engine cover, w/imitation spare. "Spare" pop rivets to engine cover. Specify "spare" gel-coat color when ordering.
- 10) Brake and Steering extensions, Steering Bushing.
- 11) One pair STEEL rear body supports. Bolts to chassis and body inner panels.
- 12) SPECIAL windshield frame, complete w/safety glass.
- 13) Fender welt (specify color). Approximately 45'.
- 14) Leather-grained fiberglass dash, specify gel-coat color. Has raised center gauge panel. Includes trim screws.
- 15) Cable shortening kit for clutch cable and accelerator.
- 16) One pair seat mounting boxes. One used as battery box, one for storage.
- 17) Gel-coat (for touch-ups) and assembly Manual. Manual available in advance, send \$8.00, refundable w/purchase of body kit.

ALL PRICES ARE FOB HOLLY HILL, FL., SUBJECT TO CHANGE

*BECAUSE OF CONTINUALLY CHANGING FREIGHT RATES, PICK UP IS RECOMMENDED

OPTIONAL ACCESSORY LIST

Standard type door hardware	59.95	set
Aluminum windshield brackets, hardware..... SOLID MOUNT.....	29.95	pr.
MIGI steel grille shell..... CHROMED	275.00	
MIGI stainless steel grille slats, w/pop rivets.....	29.95	set
Moto-meter ornament for top of grille	39.95	
Bumper face bars w/brackets & bolt package	195.00	pr.
Bumper guards, chromed steel, set of 4	4/95.00	set
Headlight housings, 7" chromed.....	59.95	pr.
Front fender park/directional lights, chromed- bullet..... LUCAS "TD" STYLE.....	99.50	pr.
License plate light, chromed w/plate bracket	14.95	
Back-up light, chromed	29.95	
Fog light 5½" amber, chromed housing	54.95	
Driving light, 7" white, chromed housing	59.95	
Wiper arms and 9" blades, use with VW wiper assembly	25.95	set
Inside rear view mirror, dash-mount.....	13.95	
Outside fender mount rear view mirrors, chromed	29.95	pr.
VDO s/meter, tach, oil pressure w/sender, ammeter, fuel gage	295.00	set
Gages are all electrical w/lights and chromed rings.....		
DASH PACK: 3 indicator lights, 1 interior light, 4 toggle switches, dash handle	29.95	
Wooden steering wheel, 13½" flat dish; w/horn adapter (specify year)	95.00	
Runningboard trim, bullet tips, chrome	21.95	
MIGI deluxe wiring harness. Includes ends, fittings, fuse block, terminal strip. Accommodates all accessories	150.00	
Windshield WASHER kit, mechanical; nozzles, pump, bottle, hose	39.95	
Defroster kit, 12 V blower, vent hose	49.95	
Headlight Stoneguards, chromed brass mesh.....	59.95	pr.
Badge Bar, chromed w/brackets for fog & driving lights	39.95	
BADGES.....	19.95	ea.
Tank straps for engine lid, stainless steel.....	21.95	
Luggage rack w/attaching bolts, chromed	55.95	
Wind-wings, attach to windshield frame (frame must be tapped)	55.95	pr.
Air horns, 2 trumpet w/compressor, chromed, 12V ONLY.....	59.95	
Antenna, dual side mount.....	9.95	
Nut & bolt package for body assembly and securing to chassis	75.00	
Wire wheel hub caps, set of 4	125.00	set

MIGI convertible top, bows, snaps, zip-in curtains with side windows
that zip on three sides \$375.00
SPECIFY: White, tan, black, brown, navy, maroon or buckskin.

MIGI "deluxe" upholstery kit. Carpet cut & bound. Covers complete interior.
Vinyl door panels w/pockets. Vinyl SEWN PLEATS on seat and backrest.
Complete WITH padding and plywood backing. READY TO INSTALL,
with contour seat back..... 650.00

COLORS: CARPET - Black, Brown, Red, Buckskin, Blue, Grey or Maroon.
VINYL - Black, Brown, Red, White, Blue, Buckskin, Tan, Maroon or Grey.
VELVETS - Black, Blue, Red, Buckskin, Maroon or Grey.
*(see additional cost, below)



DAYTONA MIGI - DELUXE ASSEMBLED BODY

The DAYTONA MIGI may be purchased as a fully assembled body, completely wired
and including all items listed on opposite page and above..... \$6495.00

This leaves only the chassis preparation and attaching the DAYTONA MIGI deluxe assembled body
to the VW chassis and installation of interior.

Additional items available for both assembled units and basic body kits:

Two-tone body color	ADD	100.00
* Velvet or Velour seats, door panels	ADD	70.00
AM/FM stereo/tape deck, speakers	ADD	200.00
Tonneau cover, specify color	ADD	250.00
Musical air horns, black trumpets	ADD To Dual	50.00
Stainless steel grille shell	ADD To Chrome	200.00
Fold-down windshield brackets	ADD To Stationary	20.00
TD style door hardware	ADD To Standard	60.00
Wood dash board, pre-finished, holes drilled	ADD	140.00

NOTE: As a service to purchasers of the DAYTONA MIGI deluxe assembled body, your nearest DAYTONA
MIGI dealer can prepare a chassis and install the body. You may supply the VW for conversion or you
may purchase a VW chassis from the dealer. COMPLETED CARS also available from several of our
dealers. Prices will vary with location, chassis year, reconditioning, etc..

CRATING CHARGE FOR FREIGHT SHIPMENTS, BASIC BODY KIT OR ASSEMBLED \$125.00

ALL PRICES FOB HOLLY HILL, FL., SUBJECT TO CHANGE

Because of continually changing freight rates, pickup is recommended, if possible.

PROPER NAMES

The use of proper names, registered names or any trade names, herein, is for descriptive purposes **ONLY** and in no way are they used to infer or intend to infer a direct connection between our company, its representatives or its products and said names and/or companies.

WARRANTY

Our DAYTONA MIGI BODY COMPONENTS are guaranteed for a period of 6 months from date of delivery against defective material and/or workmanship.

We will replace or repair any part returned to our factory or inspected in the field by an authorized representative and found to be defective.

Other equipment and/or accessories, not manufactured by us, but furnished with our kits shall be subject to the guarantee as provided by the manufacturer of said equipment and/or accessories.

Except for this warranty, there are **NO** other guarantees, warranties or representations expressed or implied. No person, firm or corporation is authorized to assume for use any other liability in connection with the sale of our products.

DAMAGE IN TRANSIT

Claims for damage in shipment should be made by **YOU** to the carrier as soon as damage is discovered. We are not responsible for, nor in a position to make a claim, after the freight company accepts shipment from us. **INSPECT ALL MERCHANDISE UPON RECEIPT, IN PRESENCE OF DRIVER.**

RETURNS

Before any merchandise is returned, the purchaser must obtain written authorization from the factory. Transportation charges for parts returned under the warranty will be borne by the purchaser if the returned parts prove not to be defective. **NO RETURNS AFTER 60 DAYS.** A 15% charge will be imposed on all returns unless due to our error. All freight must be prepaid.

ORDERING

Upon receipt of your order, a factory representative will call you. You will also receive a copy of your invoice, after computing.

A copy of the Bill of Lading will be forwarded when shipment is made, showing date of shipment, name of carrier and COD balance, if any. If your order is to be delivered by our trailer, you will be called and given the delivery date so that you may have any payments ready for our driver.

A 50% deposit is required with all orders. For prompt service, use money orders, bank drafts or certified checks. ALL pickup orders are cash or certified checks. A 15% charge is assessed on cancellations. Make checks payable to DAYTONA AUTOMOTIVE FIBERGLASS, INC.

DELIVERY

Every effort will be made to ship your kit within (3) weeks, assembled units (6) weeks. Labor, availability of raw materials, accessories and trucking are all determining factors.

DAYTONA'S MIGI II

Making the transition from replicar to classic reproduction

Story & Photography by Dennis Adler

This is an awful thing to say, but I've never liked MG TD replicas. It has nothing to do with the fact that they are fiberglass, or that they are not totally authentic. It has always been that inappropriate little Volkswagen engine churning away . . . back there . . . back where the gas tank and spare tire should be. Very unsettling.

Possibly, I was not alone in my discontentment. Perhaps those noisy four-cylinder Deutchmills are finally getting scarce. Whatever the reason, there are at last MG TD replicas with an engine under their bonnet and a gas tank in the rear.

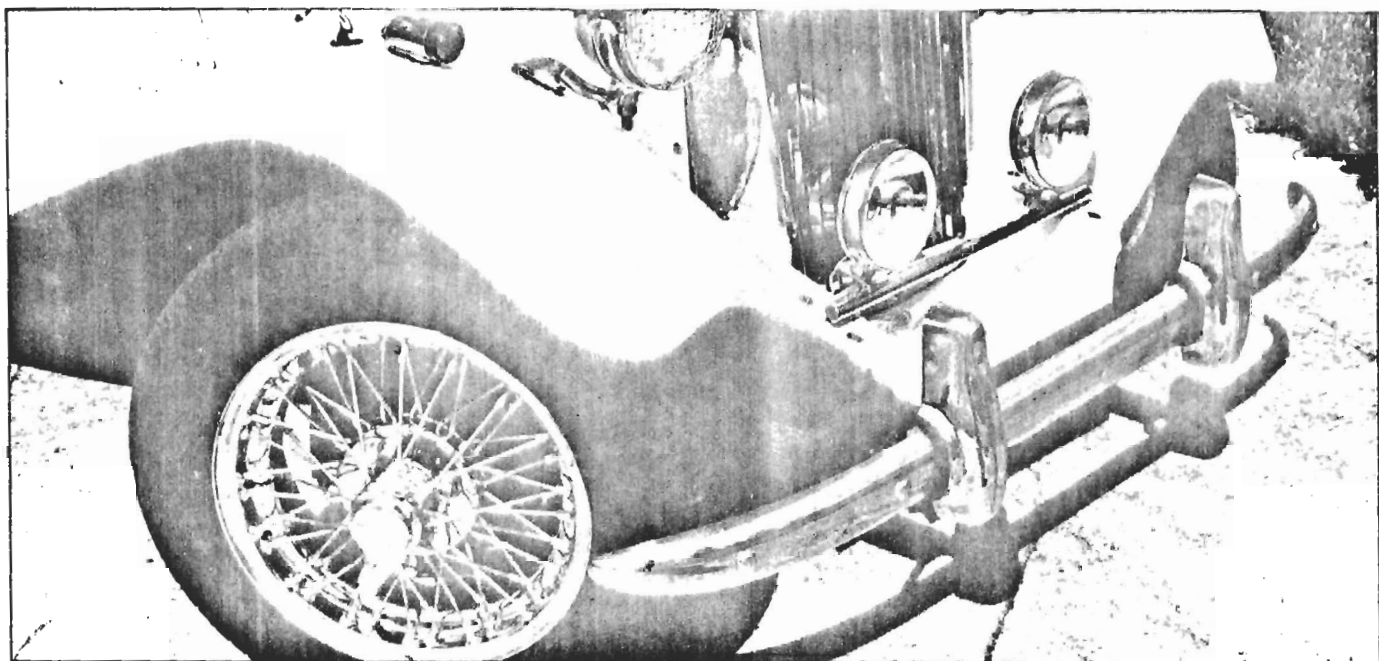
Among the earliest of the TD replicas was the Daytona MiGi—a fiberglass simulacrum of Cecil Kimber's mighty Midge. A good copy, but laden with the engine arears. For 1982, Daytona makes amends

to Kimber, MG and all those who have wanted an MG TD replica but found the starboard engine just too bitter a pill to take. The MiGi II in either kit or completed configuration, puts an ample four-cylinder 75-hp General Motors engine and drivetrain beneath a *very* authentic TD body.

The MiGi is almost totally changed from the first model TDs. The main outer body is the same, but beyond that, Daytona has done an outstanding job of producing not a

Rear deck is an accurate reproduction of the original TD gas tank and spare tire mount.

Wire wheels and improper profile tires are an instant giveaway to the MiGi II. The combination though, is aesthetically balanced.



replica, but a reproduction. There is quite a distinction between those two terminologies.

Both the front and rear deck are true in design to the original car, in fact, original MG TD replacement grille and louvers are used, along with reproduction headlamps and mounting brackets. The hood is center hinged and all the exterior hardware is authentic in design. The same holds true of the rear, with an authentically styled gas tank and spare tire rack.

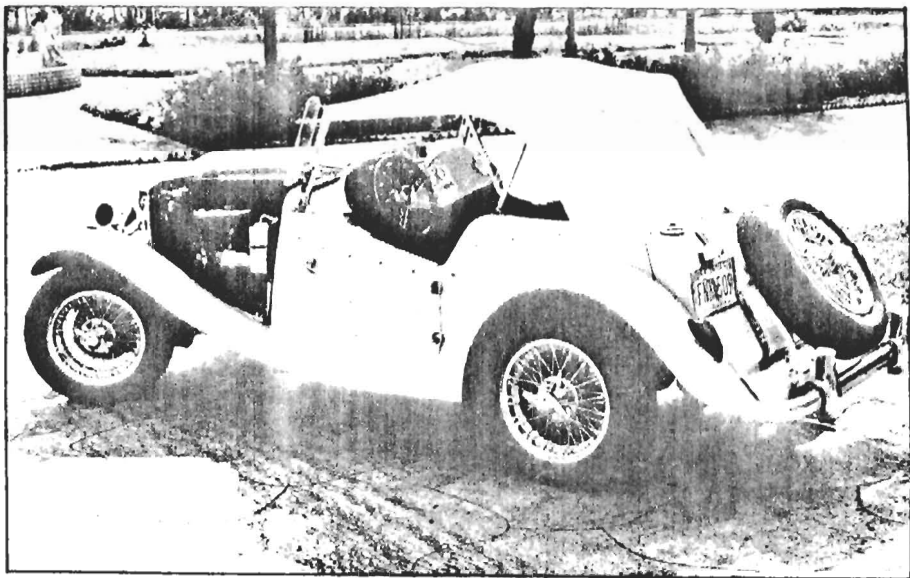
Externally, the only differences are the use of conventional wind-screen wipers, and contemporary wheels and tires. The interior is "styled" after the Midge, with a contour seat back and split bench cushions. The dash is the only area where "too much" license has been taken, using a wood facia in the original shape, but scattered with VDO instruments. Of course, there is nothing preventing the kit builder from making it an authentic MG dash by purchasing TD replacement parts from a restoration shop such as Mike Goodman's in Van Nuys, California, or an MG parts supplier like Moss Motors in Goleta, California.

Daytona designs the MiGi II to utilize a Chevrolet Chevette engine, transmission and driveline, on their own two-inch by four-inch eleven gauge steel frame. The frame is completely readied for the GM running gear, with a Chevette cross member, motor mounts, transmission mounts, rear end mounts, spring perches, radiator bracket, master cylinder bracket, pedal assembly brackets and rack and pinion steering mounts already welded in place to the frame. Outside of having the Chevette driveshaft shortened, assembly of the front engine MiGi is an unbolt and rebolt procedure.

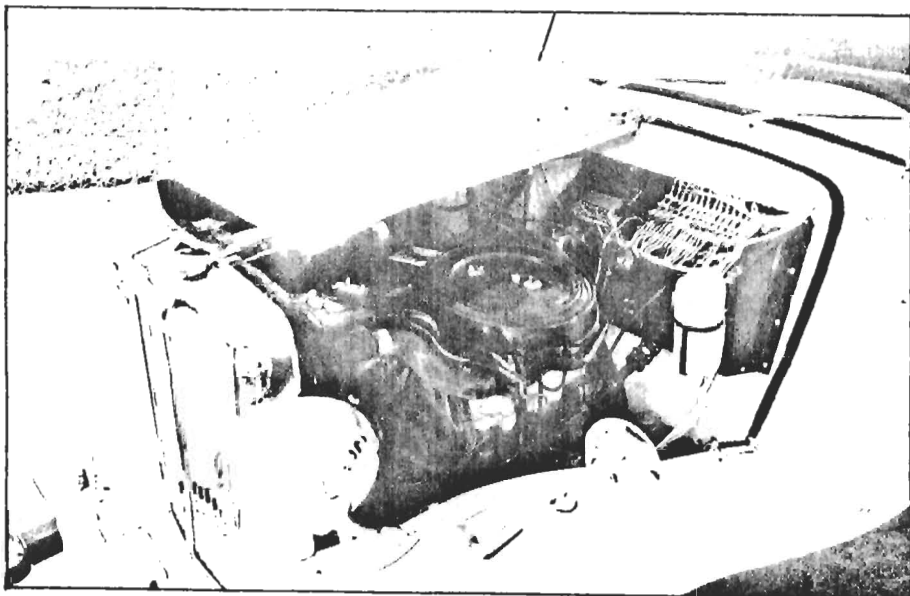
From behind the wheel of a completed MiGi II, the feeling is very similar to the original car. Exterior dimensions and wheelbase are exactly the same. The Chevrolet four delivers twenty-one more horsepower with 350cc greater displacement. The original TD weighed in at 2,175 pounds with a 60/40 weight distribution. The MiGi II hits the scales at 1,700 pounds with a near 50/50 balance front to rear.

The front engine delivers power in good proportion and the car handles very well. What is most notice-

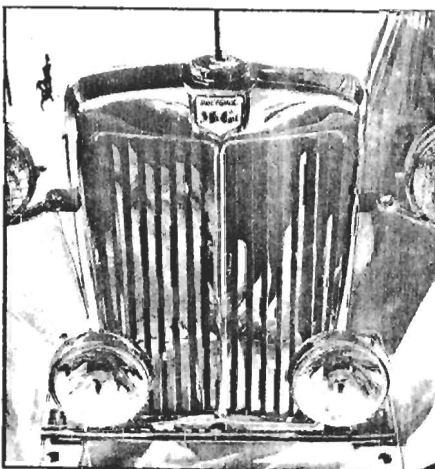
Original MG replacement parts are used on the MiGi II. Grille shell and louvers are factory replacement parts, headlamps, stone guards and mounting brackets are all reproduction parts.



Top bows are marine quality stainless steel, and a bit higher than original to allow more head room.



The fender lines and center hinged hood add a high level of authenticity. Chevette engine tucks neatly under the MG reproduction, and is easily accessible for service.



able, and enjoyable, is the sound of the engine. It is up front where it belongs, it is just loud enough to be pleasantly noticed, and the exhaust note has just enough rumble to it. The car feels good, more like the real item, and it looks like it, too.

At \$7995 for the kit (less the Chevrolet running gear) the MiGi II offers a very pleasing compromise between the kit and the real MG TD. It's long overdue, but it's done right. Kimber is still no doubt spinning in his grave, but at a slower rpm we suspect. As for us, we finally like MG TD replicas.

* * *

For information write: Daytona Automotive Fiberglass, Inc. Dept. CSIC, Holly Hill, FL 32017, or call (800) 874-0138.



by

Daytona Automotive Fiberglass, Inc.

819 Carswell Avenue • Holly Hill, Florida 32017

(904) 253-2575 (904) 255-2110



JUST FOR THE RECORD!!

In view of the numerous MG-TD replicas on the market today, and the various claims of these various manufacturers, we would like to take this opportunity to point out a few facts.

In 1974, we engineered and started manufacturing (in Feb. 1975), a fiberglass replica of the classic MG-TD that would bolt to the standard VW chassis. We called it "MIGI". Throughout the following years, we modified, improved and innovated many new items to enhance the "MIGI", including a fold-down windshield, stainless bumpers, a badge and light bar . . and . . our own chromed steel grille shell, not a modified original TD replacement. (Stainless grille shells also available). We did NOT lengthen the original length of the MG-TD hood and side panels to accommodate an existing grille shell. We made extensive efforts and incurred costs to maintain the "original" TD size on all body components.

YES, WE WERE THE FIRST and of course, we think the finest and most authentic in size!! AND, as of January 1, 1982, we will produce and sell the only "MIGI", as decreed by a Federal Court Order!!

Our body components are of the highest quality and, once assembled, produce a sportscar that not only is structurally sound, but possesses nimble sports car performance. A QUALITY UNPARALLELED IN THE INDUSTRY.

OUR PRICES are the most reasonable on the market. We do not INFLATE them and then promise discounts, if you buy within a certain time frame.

Leadership in any business spawns copies. In fact, many others now on the market, are produced by our "former" dealers or their associates. We think of them not as MG-TD replicas, but as "MIGI" replicas!

There is always those that insist they can duplicate the same quality and sell thousands more. Huge fiberglass plants, armies of "hard-sell" salesmen, massive ad campaigns and the motto "sell, sell, sell" become the order of the day. Prices soar to cover these staggering costs. Quality control and service fight a losing battle against mass production and profits. The real loser, of course is you, the customer.

WE ARE NOT A COMPANY that sells our products by "down-grading" others'. We prefer to sell our products on their own merits. We have built a reputation for quality and good service and we will NOT sacrifice this in the interest of higher profits at the customer expense!!

WE URGE YOU TO COMPARE.

Sincerely

LaVerne
LaVerne Martincic, President
Daytona Automotive Fiberglass, Inc.

DAYTONA
MIGI



by

Daytona Automotive Fiberglass, Inc.

819 Carswell Avenue • Holly Hill, Florida 32017

(904) 253-2575 (904) 255-2110

DAYTONA
MOYA



April 1, 1982

Daytona MIGI II, Chevette powered kit

ALL FIBERGLASS BODY COMPONENTS WITH FULL FLOOR, PLUS \$7995.00

- Windshield frame & glass with chrome fold-down brackets
- 1 pr. wind wings
- 1 set door hinges, hood hinges, latches, etc.
- 60' fender welting
- TD door hardware
- TD grille set
- Bumpers, brackets, back-bars, bolts
- Bumper guards, set of 4
- 1 pr headlight housings
- 1 pr headlight stoneguards
- 1 pr headlight mounting brackets/CHROMED
- 1 license plate light
- 1 pr front fender lights
- 1 back up light
- 1 pr tail light lens, rings, sockets
- 1 set wiper arms & blades
- 1 inside mirror
- 1 pr. outside mirrors
- 1 set VDO gages
- 1 dash pack
- 1 wood dash panel
- 1 steering wheel and adapter
- 1 set runningboard trim/chrome
- 1 wiring harness
- 1 washer kit
- 1 defroster kit
- 1 set 2 trumpet air horns
- 1 body bolt package
- 1 light bar
- 1 fog light
- 1 driving light
- 1 DAFI badge
- 1 pr. tank straps
- 1 antenna
- 1 TOP SET, specify color
- 1 Deluxe vinyl interior, carpets.

- 1 PRE-FABRICATED frame kit, including spare tire carrier, radiator bracket, master cylinder bracket, pedal assembly bracket, steering shaft universal, gas tank support, fan assembly. Frame has front cross member, engine mounts, transmission mount, spring perches, etc.

Assembly manual is included with the kit, but may be purchased in advance.
Manual \$25.00, refundable with purchase of kit.

OPTION: Dayton wire wheels, set of 5 (15" x 5") \$1995.00
(not included in the above kit)



by
Daytona Automotive Fiberglass, Inc.
819 Carswell Avenue • Holly Hill, Florida 32017
(904) 253-2575 (904) 255-2110



JOIN OUR "SALES REP" PROGRAM

- 1st: You will receive a \$500.00 discount on a complete kit or deluxe assembled body, your choice of model and color combination.
- 2nd: We will list your name, address and phone number on our "Sales Rep" list which will be mailed out with literature inquiries. (Your option)
- 3rd: You will show your Daytona to prospective customers, attend shows, etc. (we will supply literature for shows, no charge) and assist the customer in filling out our order form.
- 4th: You will send in the order and deposit check made payable to DAYTONA AUTOMOTIVE FIBERGLASS, INC. DO NOT have deposit checks made payable to you!!
- 5th: You may offer the customer the \$500.00 discount and sales rep program, outlined herein. Attach coupon to customer's order form.
- 6th: You will receive a commission check from the factory, in the amount of 5% of the invoiced product total (crating & shipping charges excluded). Invoices will be made out directly to the customer and a copy will be forwarded to you, upon receipt of the order blank. Your commission check will be forwarded when order is complete and paid in full.

The orders will be shipped directly to your customer, we will collect all funds due. So you really have very little to do other than show your car. answer a few questions, send in the order. WE DO THE REST!!

AND . . a little extra money in your pocket is always welcome, especially in todays economy!!

SO JOIN OUR PROGRAM NOW, send in the coupon below with your order and deposit. We will forward a literature pack for your use in sales. Be sure to sign all order blanks UPON RECEIPT from the factory.

For further information call 800-874-0138.

YES, I want to join your Sales Rep program. I (do) (do not) want my name listed on the mailed out "sales rep" list.

I have enclosed my order and deposit and this coupon, entitling me to a \$500.00 discount for joining the program.

Signed _____ Address _____
Phone no. () _____ City, State _____

AUTHORIZED DEALERS

AR: LAWRY'S USED CARS Hwy. 71 South Mena (71953) 501/394-9938	GA: C & K ENTER. 17-A Meddin Drive Tybee Island (31328) 912/786-5594	NJ: COTTAGE INDUSTRY, INC. 414 Washington Ave. Montclair (07042) 201/746-4405
CA: SUNDANCE MOTORCARS 2809 San Pablo Ave. Berkeley (94702) 415/849-1751	JACK SANDIFER 100 Juliano Drive Warner Robbins (31092) 912/923-2974	NY: WAY DUNE BUGGY'S, INC. 1009 Joseph Ave. Rochester (14621) 716/544-6140
UNIQUE MOTOR CARS 935 Sunset Drive Costa Mesa (92627) 714/642-6186	IL: CORY'S CLASSIC CARS 1501 W. Daytona Drive Peoria (61614) 309/692-5410	OK: PHIL'S AUTO SUPPLY 1131 No. Penn Ave. Oklahoma City (73107) 405/528-8055
CO: CREATIVE CARS, INC. 2656 Chestnut Grand Junction (81501) 303/242-8590	KING KLASSICS 5895 Virginia Ave. Clarendon Hills (60514) 312/986-1943	PA: KLINES KLASSICS, INC. 1616 McBarron Street Pottsville (17901) 717/622-3678
DE: BUD BOLAND, AUTO BE 20 East Green Valley Cir. Newark (19711) 302/368-3363	IN: PENROD OIL CO., INC. RR #1, Box 16 Angola (46703) 219/665-5564	LEWIS PENNA 4423 Holiday Drive Erie (16502) 814/833-9956
FLA. FIBERGLASS SPEC. 11581 Grove St., No. Seminole (33542) 813/391-3190	MA: THE OLD CAR COMPANY 20 Middlesex Street No. Chelmsford (01863) 617/256-1434	SC: COASTAL REPLICARS, INC. Jetport Ind. Park, Drawer 1 Myrtle Beach (29577) 803/626-3446
GENE GRODZINSKI 7785 SW 70th Ave. Ocala (32671) 904/237-1948	MI: WILLIAM WEAVER 3214 Schultz Ave. Lansing (48906) 517/485-8981	TX: DAYTONA MIGI OF HOUSTON 11020 Old Katy Rd. Houston (77024) 713/932-8006
HARRY JONES Route 6, Box 1729 Bonita Springs (33923) 813/992-0583	MS: SOUTHERN ROADSTERS, INC. P.O. Box 1331 McComb (39648) 601/249-3710	VA: HILAND CLASSICS, INC. Route 1, Box 33 Chilhowie (24319) 703/783-8006
M & H AUTO & CORVETTE 2125 W. Landstreet Orlando (32805) 305/855-7043	MO: CLASSIC RESTORATION & REP. 7577 Olive Street. Rd. University City (63130) 314/726-4911	REPLICARS, INC. 5106 Redwing Drive Alexandria (22312) 703/354-1219
YOUNG FRANKLIN ENT. P.O. Box 95 Merritt Island (32952) 305/452-4442	NB: MANNON COACH BUILDERS 211 West 3rd Street Kimball (69145) 308/235-3138	

FOR INFORMATION REGARDING OUR DEALERSHIP OR SALES REP. PROGRAMS, PLEASE CONTACT
MARTIN ZIMMERMAN AT THE FACTORY, 800/874-0138, FLORIDA RESIDENT CALL 904/255-2110.

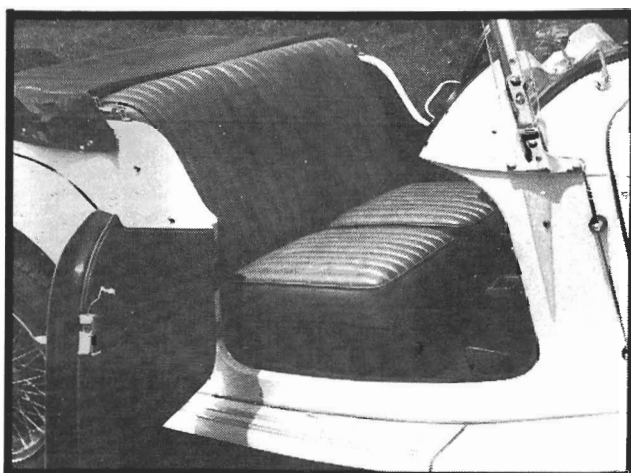
DAYTONA'S **MIGETTE**

by
Daytona Automotive Fiberglass, Inc.

819 Carswell Avenue • Holly Hill, FL 32017
800-874-0138 904-253-2575



Utilizing the Chevrolet Chevette, 75 H.P., 4 Cylinder Engine and Drive Train, a 2" x 4" 11 Gauge Steel Frame and a Dimensionally Exact Body Kit with Original MG-TD Accessories.



The Migette comes in three separately packaged kits as itemized below. You may order all three kits at once OR, with a \$2000 deposit, you may take delivery of the frame kit first and prepare the frame and Chevette running gear. Then take delivery of the body and accessory kits when you are ready for completion.

Total package price for all three kits is:

\$7995.00

MIGI II ACCESSORY KIT

MIGI II GRILLE SET (shell, louvers, & emblem cap, MIGI II emblem	\$450.00	set
octagon false radiator cap, DAF badge).		
TD style door hardware, chromed latches & strikers	119.95	
TD style headlight brackets & "tie bar", chromed.	125.00	set
Headlight Housings, 7"	59.95	pr.
Headlight stoneguards, chromed brass mesh	59.95	
License plate light, chromed w/plate bracket	14.95	pr.
TD style front fender lights, chromed bullet w/amber lens	99.50	pr.
Back up light, chromed	29.95	
Tail-light lens, rings sockets	29.95	pr.
Fog light, 5½" amber, chromed housing.	54.95	
Driving light, 7" white, chromed housing	59.95	pr.
Light bar, chromed w/brackets for fog & driving lights	39.95	
Inside mirror, dash mount, chromed.	13.95	
Outside fender mount rear view mirrors, chromed	29.95	pr.
Electric ("beep-beep") horn	19.95	
Antenna, dual side mount	9.95	
VDO gauges; s/meter, tach, oil pressure w/sender, water temp	350.00	set
w/sender, fuel, voltmeter. All electrical w/lights and chromed rings.		
Dash pack; 2 indicator lights, 1 interior light	29.95	
4 toggle switches, w/ID plate, dash handle.		
Wood dashboard, raised center-two/one, pre-finished, holes drilled	150.00	
Wood steering wheel, 13½" flat dish with horn adapter (specify VW year) . . .	95.00	
Runningboard trim, bullet tips, chromed	21.95	
MIGI II wiring harness; ends fittings, fuse block, terminal strip	175.00	
Heater/Defroster kit (water system), vent hose	125.00	
Tank straps, stainless steel, black double welting.	21.95	pr.
Nut & Bolt package	100.00	
Wiper arms & 9" blades, use VW wiper assembly	25.95	
Windshield washer kit, mechanical; nozzels, pump, bottle, hose	39.95	
Wind-wings, attach to windshield frame (frame must be tapped)	55.95	
Bumper face bars (stainless steel) pr; back-bars, (4) brackets	225.00	
Bumper guards chromed steel, set of 4	95.00	set
Gas filler neck, chromed	24.95	
MIGI convertible top, bows, snaps, zip-in curtains	375.00	
w/windows that zip on three sides. Specify color from color chart		
MIGI deluxe interior kit. Carpet cut & bound. Covers complete interior		
Vinyl door panels w/pockets. Vinyl SEWN PLEATS on seat and backrest.		
Complete with padding and plywood backing. With contour seat back.		
READY TO INSTALL.	\$650.00	
VELOUR or VELVET (optional)	add \$ 70.00	

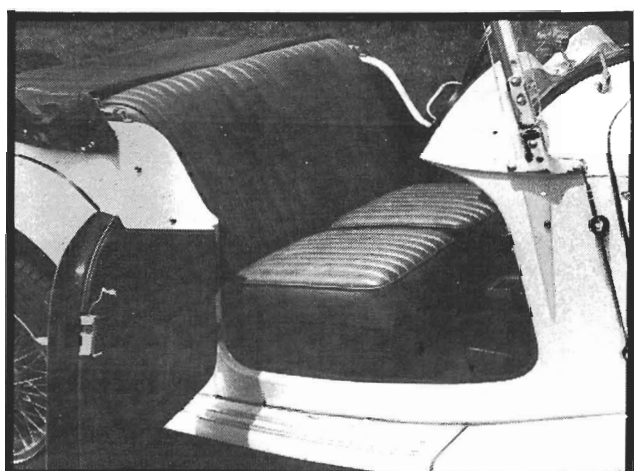
The above items may be purchased as a complete accessory package or individually at the price shown, by purchasers of the Body and Frame Kit.

DAYTONA
MIG II
An MG-TD Reproduction

by
Daytona Automotive Fiberglass, Inc.
819 Carswell Avenue • Holly Hill, FL 32017
800-874-0138 904-253-2575



Utilizing the Chevrolet Chevette, 75 H.P., 4 Cylinder Engine and Drive Train, a 2" x 4" 11 Gauge Steel Frame and a Dimensionally Exact Body Kit with Original MG-TD Accessories.



SPECIAL INTRODUCTORY OFFER!

Purchase the Body and Accessory Kits and save over \$1000 at

\$5995.00

Purchase all three kits together and save over \$1500 at

\$7995.00

MIGI II ACCESSORY KIT - \$3295

MIGI II GRILLE SET (shell, louvers, & emblem cap, MIGI II emblem.... octagon false radiator cap, DAF badge).	\$450.00	set
TD style door hardware, chromed latches & strikers	119.95	
TD style headlight brackets & "tie bar", chromed.....	125.00	set
Headlight Housings, 7".....	59.95	pr.
Headlight stoneguards, chromed brass mesh	59.95	
License plate light, chromed w/plate bracket	14.95	pr.
TD style front fender lights, chromed bullet w/amber lens	99.50	pr.
Back up light, chromed.....	29.95	
Tail-light lens, rings sockets.....	29.95	pr.
Fog light, 5½" amber, chromed housing.....	54.95	
Driving light, 7" white, chromed housing	59.95	pr.
Light bar, chromed w/brackets for fog & driving lights	39.95	
Inside mirror, dash mount, chromed.....	13.95	
Outside fender mount rear view mirrors, chromed	29.95	pr.
Electric ("beep-beep") horn	19.95	
Antenna, dual side mount	9.95	
VDO gauges; s/meter, tach, oil pressure w/sender, water temp	350.00	set
w/sender, fuel, voltmeter. All electrical w/lights and chromed rings.		
Dash pack; 2 indicator lights, 1 interior light	29.95	
4 toggle switches, w/ID plate, dash handle.		
Wood dashboard, raised center-two/one, pre-finished, holes drilled	150.00	
Wood steering wheel, 13½" flat dish with horn adapter (specify VW/year)	95.00	
Runningboard trim, bullet tips, chromed	21.95	
MIGI II wiring harness; ends fittings, fuse block, terminal strip	175.00	
Heater/Defroster kit (water system), vent hose	125.00	
Tank straps, stainless steel, black double welting.....	21.95	pr.
Nut & Bolt package	100.00	
Wiper arms & 9" blades, use VW wiper assembly	25.95	
Windshield washer kit, mechanical; nozzels, pump, bottle, hose	39.95	
Wind-wings, attach to windshield frame (frame must be tapped)	55.95	
Bumper face bars (stainless steel) pr; back-bars, (4) brackets	225.00	
Bumper guards chromed steel, set of 4	95.00	set
Gas filler neck, chromed	24.95	
MIGI convertible top, bows, snaps, zip-in curtains	375.00	
w/windows that zip on three sides. Specify color from color chart		
MIGI deluxe interior kit. Carpet cut & bound. Covers complete interior		
Vinyl door panels w/pockets. Vinyl SEWN PLEATS on seat and backrest.		
Complete with padding and plywood backing. With contour seat back.		
READY TO INSTALL.....	\$650.00	
VELOUR or VELVET (optional).....	add \$ 70.00	

The above items may be purchased as a complete accessory package or individually at the price shown, by purchasers of the Body and Frame Kit.

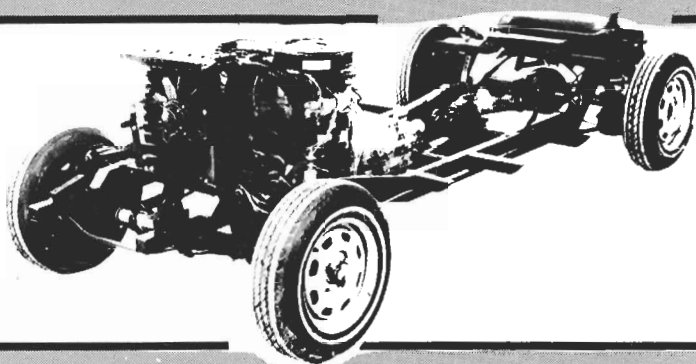
MIGI II FRAME KIT - \$2995

The MIGI II Frame Kit is 2" x 4", 11 gauge steel with the Chevette front crossmember and spring perches welded in place. All brackets to accept the Chevette components, to include the master cylinder bracket, are also welded in place!

THE MIGI II FRAME KIT ALSO INCLUDES:

Steering extension w/universal
Front Fender Supports
Steering Column Supports
Nylon Steering Bushing

Radiator bracket
Pedal bracket
Spare Tire Rack
Assembly Manual



MIGI II BODY KIT - \$2995

The MIGI II Body Kit comes completely trimmed and premarked for fitting. The main body is steel reinforced and has the full firewall, inner liner and floor with tunnel already glassed in place. **There is no cutting out of doors or fiberglassing of inner structures necessary!**

THE MIGI II BODY KIT INCLUDES:

Main Body
Rear fenders
Front Fenders
Front Bib
2-piece Hood
2 Hood Side Panels
Seat mounting boxes

Doors
SS Door Hinges
Rear Deck Lid
Runningboards
2 Piano Hood Hinges
1 pair Hood Latches
Gel-coat touch up

1 pair bonnet hooks
Windshield Frame
Windshield Glass
Fold-down w/s brckts.
60 feet of Welting
Grille Shell Brace

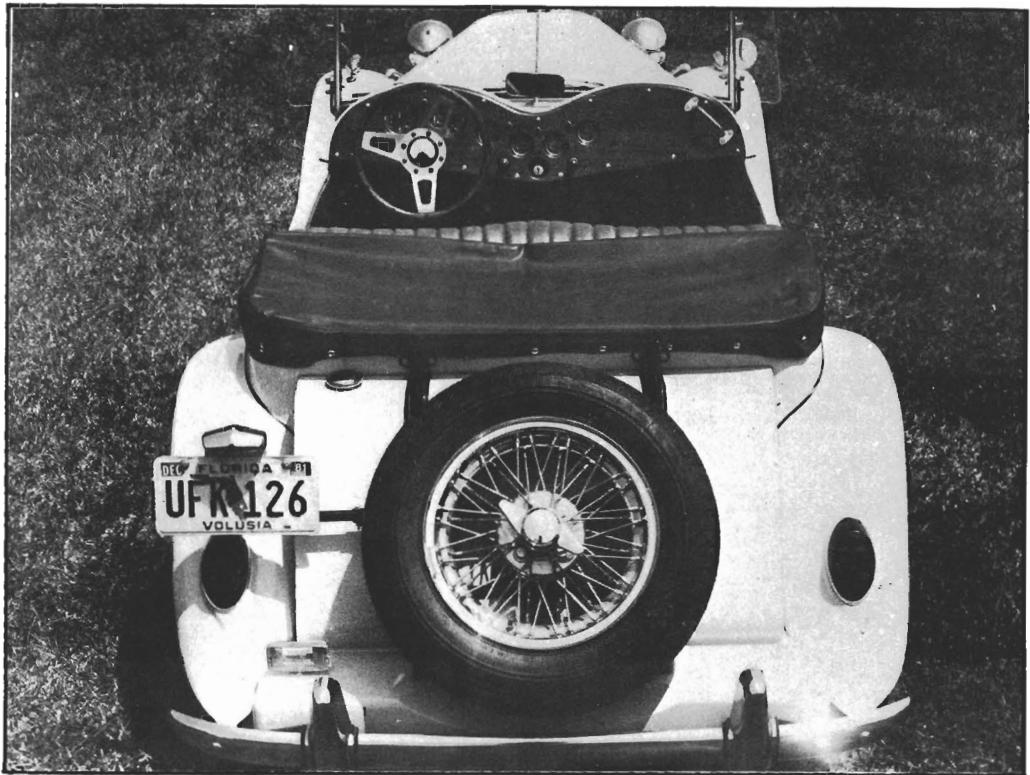
Crating Charge for Shipping \$125.00

SPECIFICATIONS

MG-TD

MIGI II

Overall body length	137"	137"
Overall body width	60"	60"
Hood length	42.5"	42.5"
Wheel Base	94"	94"
Horsepower	54	75
Cylinders	4	4
Displacement	1250cc	1600cc
Compression ratio	7.25:1	8.5:1
Tire Size	15 x 5.50	165SR x 15 or 185 x 13
Bore and stroke	66.5 x 90	82.0 x 75.7
Weight distribution	60-40 (2175 Lbs.)	50-50 (1700 Lbs.)



Wire Wheels Available

\$1995.00

Set of Five

FOR DETAILED ASSEMBLY MANUAL SEND \$15.00 TO:

DAYTONA AUTOMOTIVE FIBERGLASS, INC.

819 Carswell Avenue • Holly Hill, Florida 32017

Toll Free: 800-874-0138